



1260

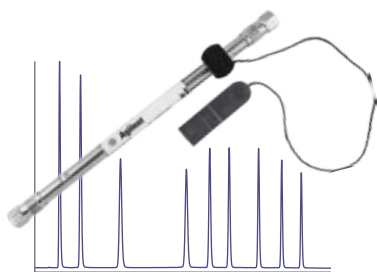
Agilent 1260 Infinity II LC

**ASPIRE TO NEW LEVELS OF EFFICIENCY –
EVERY DAY IN EVERY WAY**



EVERYDAY EFFICIENCY WITH CONFIDENCE

Put your trust in the LC platform that runs, and runs, and runs. The Agilent 1260 Infinity II LC offers the broadest choice of instrumentation while giving you the best operational efficiency to take you to the next level of confidence – every day in every way.



EVERYDAY ANALYTICAL EFFICIENCY

Reliable instrumentation combines with latest column technologies and advanced supplies to guarantee robust separation and detection performance for highest confidence in your daily results.



EVERYDAY INSTRUMENT EFFICIENCY

Easy column handling and superior sample logistics – from sample submission to data analysis – ensure fast turnaround times and highest instrument utilization.



EVERYDAY LABORATORY EFFICIENCY

Seamless method transfer and stepwise upgrade paths facilitate risk-free integration in current infrastructure – for nondisruptive transition to highest performance within the confines of your budget.

AGILENT INFINITYLAB – A PERFECT MATCH

The Agilent InfinityLab family of instruments, columns and supplies are matched to work seamlessly together, alongside Agilent OpenLAB software and Agilent CrossLab services, to provide highest efficiency in laboratory workflows. Agilent InfinityLab columns and supplies provide the links to the Agilent InfinityLab LC Series to optimize performance for highest efficiency and laboratory safety.



EVERYDAY ANALYTICAL EFFICIENCY

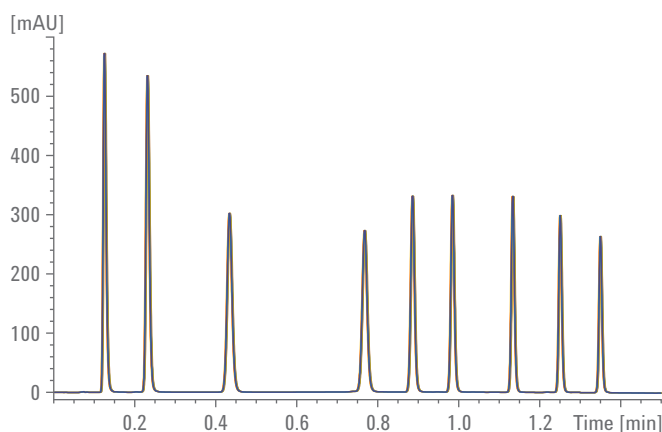
EXPERIENCE ROBUST PERFORMANCE FOR HIGHEST CONFIDENCE IN DAILY RESULTS

A broad range of reliable instrumentation combines with latest column technologies and advanced supplies to guarantee robust separation and detection performance – for highest confidence in your daily results and business decisions.

Robust and reliable solvent delivery

Delivering pressures up to 600 bar, the 1260 Infinity II Quaternary Pump is a perfect match for our InfinityLab Poroshell 120 columns. Pulse-free, stable and well-mixed gradients ensure higher sensitivity and more reliable results while the smaller particles achieve faster separations and higher resolution. With access to up to four solvents, you have utmost flexibility in automated solvent blending for a wide range of research and routine applications. Robust materials withstand the most demanding applications and keep the pump running for years, reducing downtime to a minimum and lowering operating costs.

For analysis of biological samples or applications demanding extreme pH conditions, a highly corrosion-resistant, titanium-based version of the quaternary pump is available. Combined with other 1260 Infinity II Bio-inert modules, you can configure a system with a completely metal-free sample flow path up to a power range of 600 bar – unique to Agilent.



**BIO
INERT**



The 1260 Infinity II Quaternary Pump delivers highly accurate and reproducible gradients for reliable retention time precision – even under the most demanding fast, ultrahigh performance LC conditions. In this example, 20 replicate analyses achieve an RT RSD of 0.187 % at 0.232 min and 0.086 % at 0.887 min.

Rugged, high-resolution separations

InfinityLab Poroshell 120 columns provide fast, rugged, high-resolution separations at pressures up to 600 bar and perform best with the 1260 Infinity II LC. Within our InfinityLab column family, currently 12 bonded phases are available for flexible development and straightforward transfer of methods. Each column is supplied with a permanently fitted column ID tag that is preprogrammed with details of phase and dimensions. When in use, you can confirm the type of column installed as well as track the column usage history, providing you with added confidence and security in your routine analysis. InfinityLab Quick Connect fittings provide robust, leak-tight connections for every user through innovative spring-loaded design with zero dead volumes – even after hundreds of reconnections.



InfinityLab columns and supplies match perfectly with our InfinityLab LC Series systems and solutions, taking advantage of the latest innovations to combine ease of use with robust performance, for highest confidence in your daily results.

Flexibility for any application

With our broad range of detection options, you can benefit from increased data rates to capture even the narrowest ultrahigh performance LC peaks. High-sensitivity flow cells for our diode array detector allow you to detect the weakest sample concentrations. Also available for the diode array and fluorescence detectors are special bio-inert flow cells, to guarantee safe data capture from your biological samples.

**BIO
INERT**



Choose a detection technique that meets your application requirements. Options include UV-visible, fluorescence, refractive index, evaporative light scattering or mass-selective detection for acquisition of orthogonal data from your samples.

EVERYDAY INSTRUMENT EFFICIENCY

ACHIEVE FAST TURNAROUND FOR HIGHEST INSTRUMENT UTILIZATION

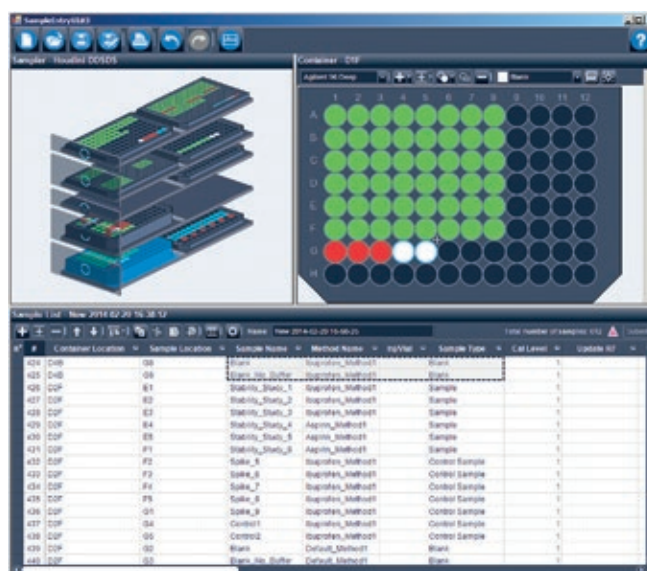
Easy column handling with direct, valve-based access combines with superior sample logistics – from sample submission to data analysis – to ensure fast turnaround times and highest instrument utilization.

Efficient sample handling and logistics

The 1260 Infinity II LC gives you unmatched flexibility to handle multiple sample containers. Simply exchange a sample tray or an entire drawer in the easy-to-access Multisampler, and submit your samples for analysis through the intuitive graphical software interface. Hundreds or even thousands of samples can be processed – with no manual interaction. The Multisampler's unique dual-needle option allows you to perform sample-handling steps in parallel to analyses of other samples, reducing overall analysis cycle times significantly.



The design concept of the 1260 Infinity II Multisampler provides for constant access for sample submission. Sample trays or entire drawers can be exchanged easily to match your application needs.

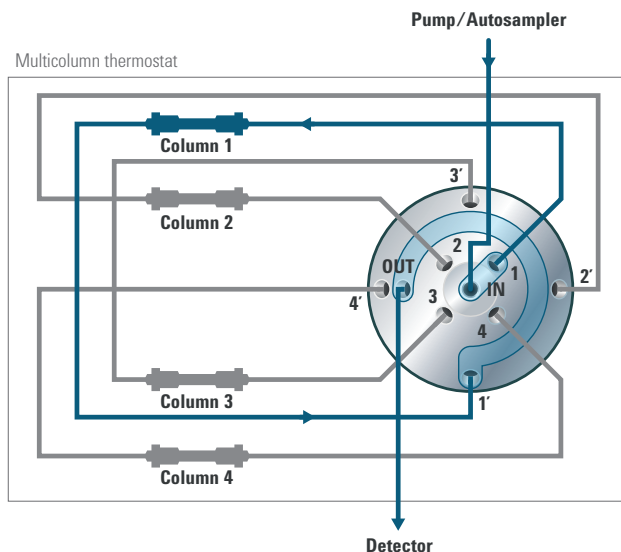


Efficient column handling and switching

The 1260 Infinity II Multicolumn Thermostat holds up to four 30 cm columns and gives you direct access to each column through an InfinityLab Quick Change switching valve. Run different methods automated without the need to disconnect and reconnect your columns. Nonremovable, single-use tags for all four columns record identity and full usage history, ensuring compliance with regulatory guidelines. Column tracking also helps you to prevent failures during important sequences or avoid mismatch of stationary phases, solvents and temperatures.



An easy-to-access compartment facilitates fast and straightforward column exchange with InfinityLab Quick Connect column fittings. Next-generation InfinityLab Quick Connect heat exchangers are also easily connected or replaced.



Efficient control, acquisition and reporting

Agilent OpenLAB CDS software gives you the most comprehensive and fully traceable management of your 1260 Infinity II LC, including instrument control, result generation, data management and advanced reporting. With OpenLAB CDS, you can visualize data trends quickly, capturing at-a-glance artifacts or outliers such as missing or additional peaks, retention time shifts, or integration problems. Extensive built-in calculations provide results directly in data analysis, without the need to generate a full report and eliminating errors caused by data export or manual transcription. Confirmation and documentation of audit-trail reviews are part of the electronic record within the data system, making it an easy task to comply with the latest FDA regulatory requirements.



Peak Explorer helps you uncover and resolve problems faster. Find anomalies at a glance – even among hundreds of chromatograms and peaks.

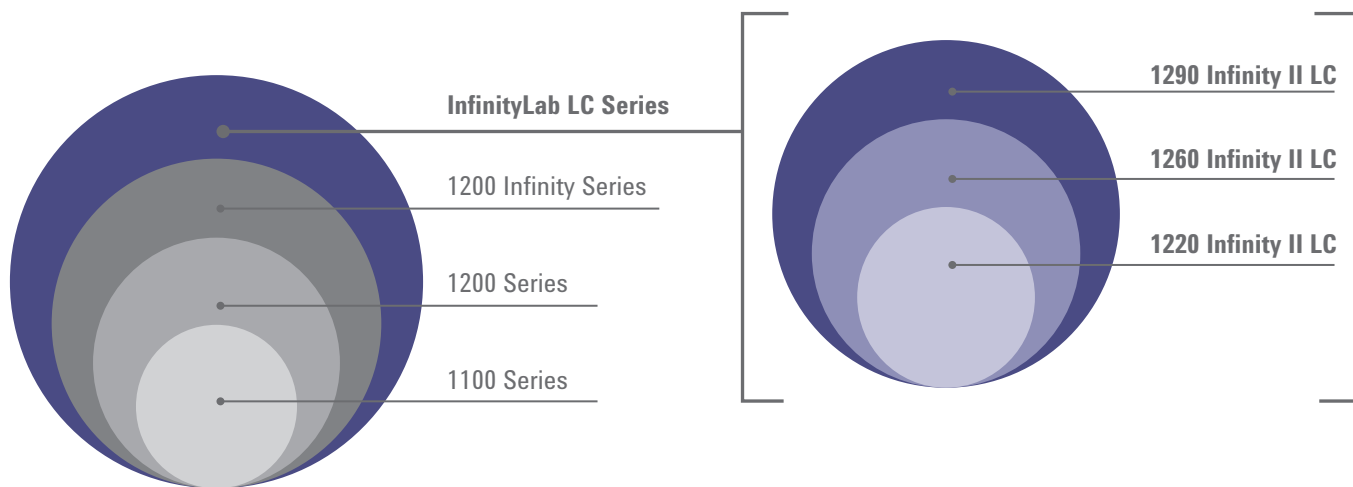
REALIZE SEAMLESS INTEGRATION FOR HIGHEST INVESTMENT PROTECTION

Seamless method transfer and stepwise upgrade paths facilitate risk-free integration in your laboratory's current infrastructure – for nondisruptive transition to highest performance within the confines of your budget.

Advance with ease, at ease

When you invest in a new 1260 Infinity II LC, you can rest assured that you can use all your established methods and run all your current applications. You can even upgrade your current Agilent LC module-by-module over time, for stepwise increase in efficiency and highest

protection of your current investments. Add a new 1260 Infinity II Multicolumn Thermostat with direct, valve-based access to four columns and run multiple methods automatically. Or, upgrade with a 1260 Infinity II Multisampler and boost your sample capacity.



While totally committed to advancing LC technology, Agilent takes compatibility with current equipment extremely seriously. When you invest in an InfinityLab LC Series instrument, you can rest assured of seamless integration in any laboratory using Agilent LC systems. And, our sophisticated models can run all methods that can be run on the more affordable InfinityLab LC Series instruments.

Get the most from your investment

If you are ready for a true technology refresh of the instrumentation and software in your lab, Agilent CrossLab provides transition services to enable rapid and seamless shift to the latest technology. Leave it to the experts to provide a speedy, stepwise upgrade that matches your needs and budget with minimal disruption to your workflows.

Agilent also offers comprehensive instrument and enterprise services as well as a full curriculum of Agilent University learning solutions to maximize uptime, simplify administration and protect the investments in your laboratory. Through preventive maintenance, our service plans protect your laboratory against the unknown, for dependable efficiency, fewer workflow disruptions, and optimized laboratory productivity. All service plans include Agilent Remote Advisor, a powerful set of proactive, real-time support and reporting features, delivered by knowledgeable Agilent experts.

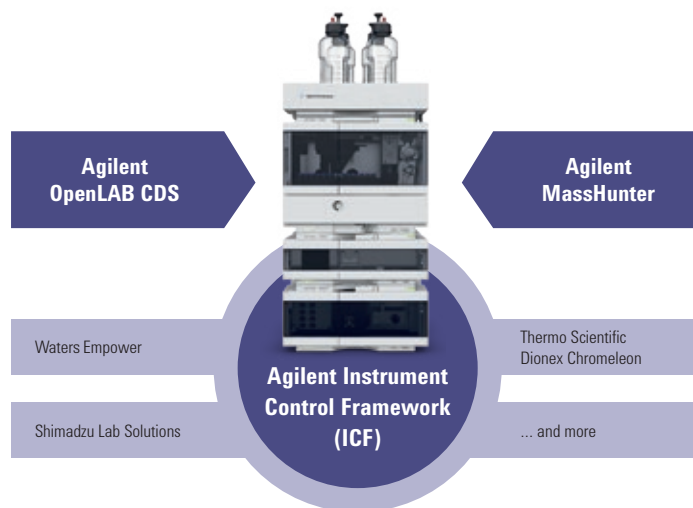
	GOLD	SILVER	BRONZE
Services Included in All Agilent CrossLab Service Agreements			
Contract-level Preferred Response vs. T&M	✓	✓	✓
Hardware Telephone Support	✓	✓	✓
Onsite Repair Services			
Unlimited Onsite Repair Visits (travel & labor)	✓	✓	✓
Parts Required for Repair	✓	✓	✓
Consumables/Supplies Required for Repair, including liners, seals, tubing, assemblies, and multipliers	✓	✓	✓
Advanced Diagnostics and Reporting			
Agilent Remote Advisor-Assist	✓	✓	✓
Agilent Remote Advisor-Report	✓	✓	✓
Agilent Remote Advisor-Alert	✓	✓	
High-Availability Services			
Extended Coverage Hours Discount	✓		

Agilent CrossLab service plans let you choose the service level that best meets your needs, goals and budget. Regional differences to service plans may apply. Additional options are available.

Take control of your chromatography

Agilent OpenLAB CDS is the perfect companion for your 1260 Infinity II LC and 6100 Series Single Quadrupole LC/MS. For more demanding LC/MS applications, Agilent MassHunter gives you combined control of your Agilent LC and Triple Quadrupole or Quadrupole Time-of-Flight LC/MS, as well as powerful tools for comprehensive data analysis.

With a strong commitment to open systems, Agilent offers Instrument Control Framework (ICF), a free-of-charge software component that makes it faster and easier for third-party providers to enable and control Agilent LCs through their CDS or workstations. Integrate a new 1260 Infinity II LC in your current CDS, seamlessly and with access to most of the advanced capabilities and features.



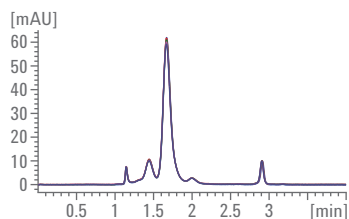
The 1260 Infinity II LC runs best when controlled through OpenLAB CDS or MassHunter software. Agilent ICF technology gives third-party CDS providers an easy route to support the 1260 Infinity II LC.

OPTIMIZE YOUR WORKFLOW EFFICIENCY WITH TAILORED LC & LC/MS SOLUTIONS

The flexibility of the 1260 Infinity II LC allows us to offer the broadest portfolio of chromatography solutions – giving you unmatched possibilities to solve your separation challenges.

Bio-inert LC solutions

The Agilent 1260 Infinity II Bio-inert LC is a dedicated solution for analysis of large biomolecules. The metal-free sample flow path ensures the integrity of your biomolecules, minimizing unspecific surface interactions and increasing column life-time. New bio-inert heat exchangers and four-column selection valve support multiple-attribute analysis without column exchange between assays. Agilent Buffer Advisor software and application-specific data-analysis tools help you to solve your biopharmaceutical challenges easily.

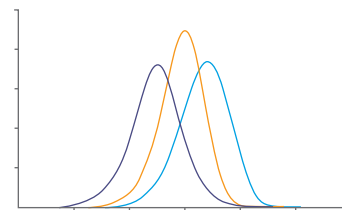


Overlay of IgG chromatograms of injection 1, 100, 200 300 and 400 on a Agilent AdvanceBio SEC 300Å, 7.8 x 150 mm column.

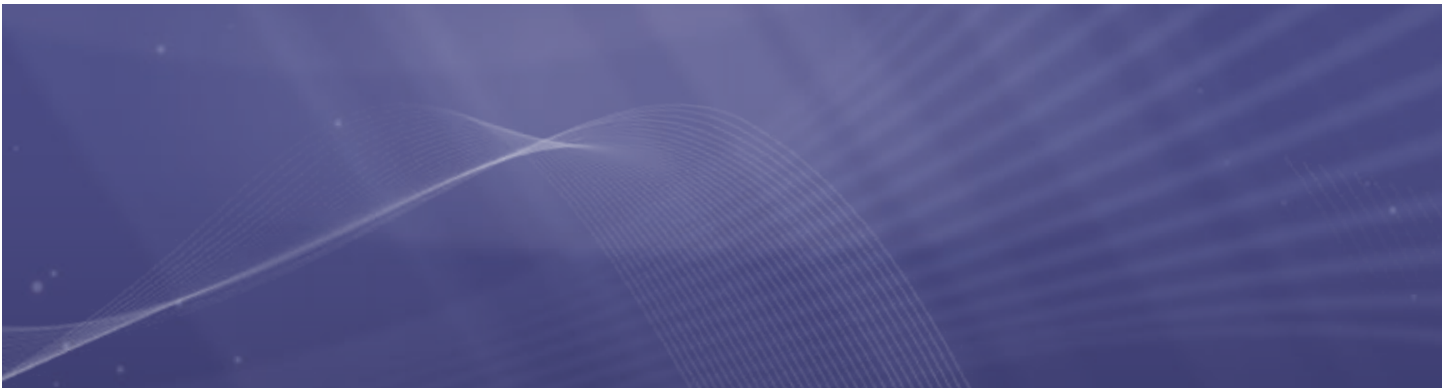
**BIO
INERT**

GPC/SEC solutions

The Agilent 1260 Infinity II GPC/SEC system is a cost-effective solution for routine polymer characterization by conventional GPC/SEC separation with refractive index, UV-visible or evaporative light scattering detection. Ideally suited for refractive index detection, the new 1260 Infinity II Isocratic Pump lets you choose between three different solvents and the built-in degassing unit achieves even better baseline stability.



Molecular weight distributions for three polyethylene samples – purple plot shows the unbranched sample.

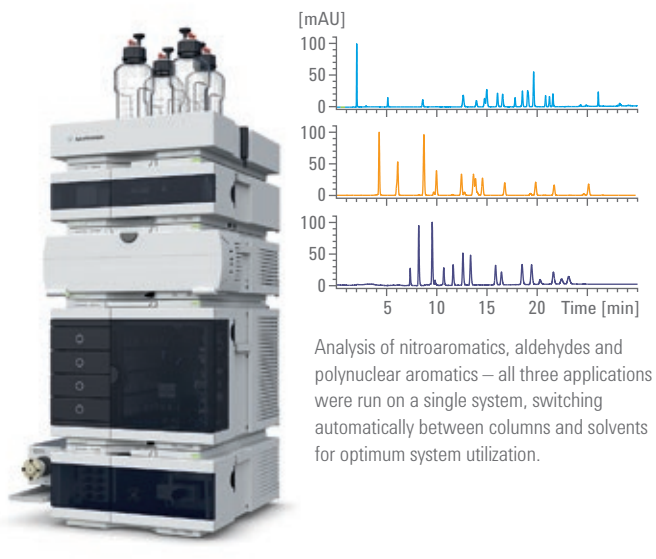
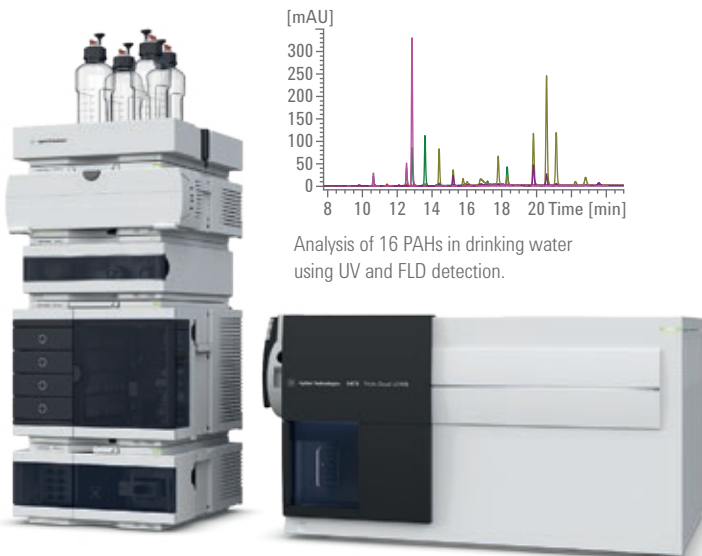


Online SPE solutions

Whether you need to enrich analytes, remove matrix components, or lower detection limits, the highly modular design of Agilent online SPE solutions provides you with the flexibility to tailor your system to match virtually any analytical LC challenge. Combining a 1290 Infinity Flexible Cube – a multifunctional module that houses reusable SPE cartridges and one or two switching valves – with a 6400 Series Triple Quadrupole LC/MS takes you into a new dimension of ultralow, trace-level detection.

Method development solutions

The Agilent 1260 Infinity II Method Development Solution comes ready-to-run and is designed for automated access to more than 600 sets of unique LC separation conditions. Different combinations of stationary phases and solvents are at your fingertips to determine the optimum separation conditions for your application. Agilent Method Scouting Wizard software allows you to generate all required methods and sequences in minutes. Powerful data reports provide you with the most suitable conditions at a glance.



Learn more

www.agilent.com/chem/1260

Find an Agilent customer center

www.agilent.com/chem/contactus

USA and Canada

1-800-227-9770

agilent_inquiries@agilent.com

Europe

info_agilent@agilent.com

Asia Pacific

inquiry_lsca@agilent.com

This information is subject to change without notice.

© Agilent Technologies, Inc. 2016
Published in the USA, May 1, 2016
5991-6781EN

